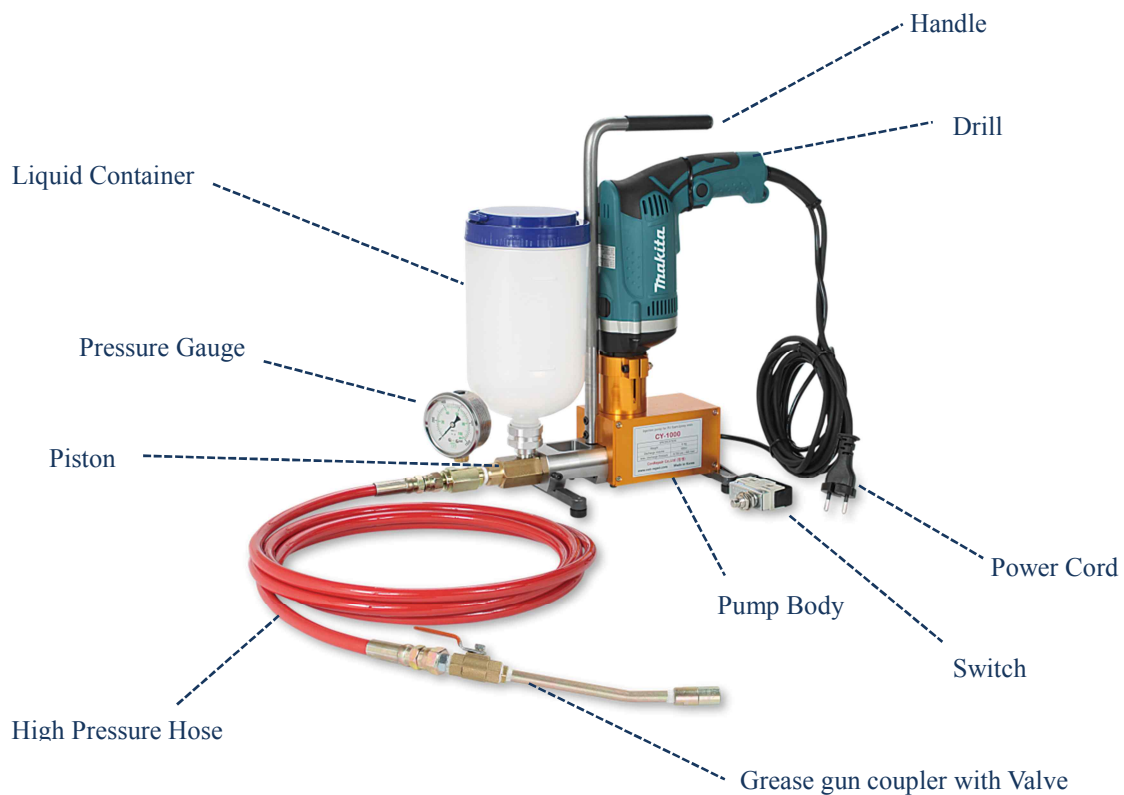


Injection Pump (Manual)

CY-1000





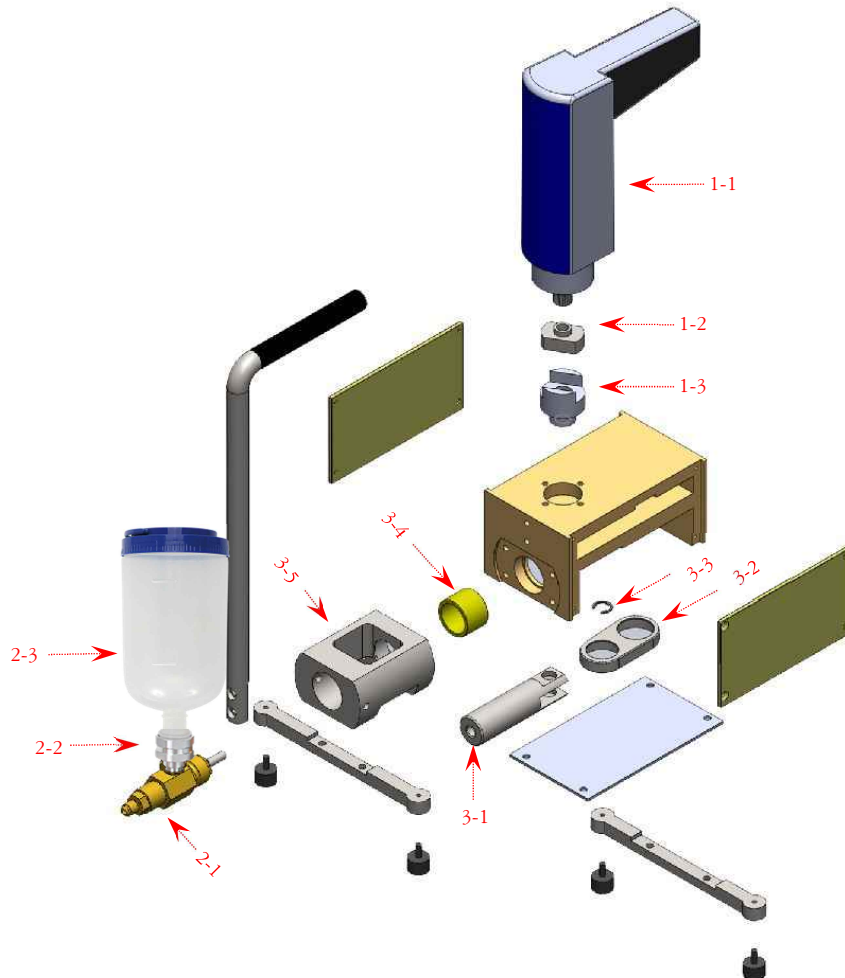
1. Specification (CY-1000: injection pump)

Driving System	Electric Motor
Weight	6kg
Size (L x W x H)	500mm x 155mm x 370mm
Power	AC 220V / 710W
Discharge	Max. 610kgf/cm ² (8,500psi)
Pressure	(Recommended Pressure : 300~500kgf/cm ²)
Discharge Volume	400cc /min

2. Features

- ▶ Single component type grouting pump with high performance
- ▶ Run by electric motor
- ▶ It is easy to carry and use (portable, 6kg weight) at job site.
- ▶ it is easy to maintenance.
- ▶ Exchange of consumables is easy and economical.

3. Structure Diagram and Part No.

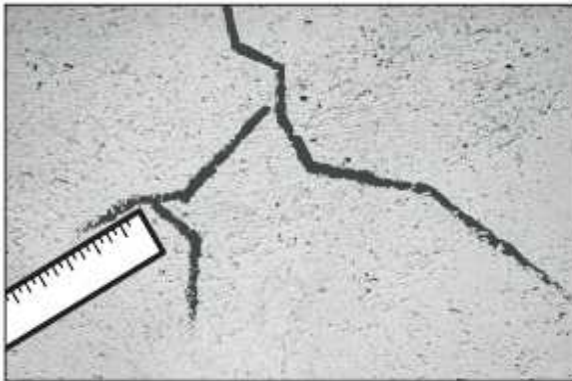


Model	Section	Part No.
CY-1000	Drill Section	1-1
		1-2
		1-3
	Piston Section	2-1
		2-2
		2-3
	Crank Gear Section	3-1
		3-2
		3-3
3-4		
3-5		

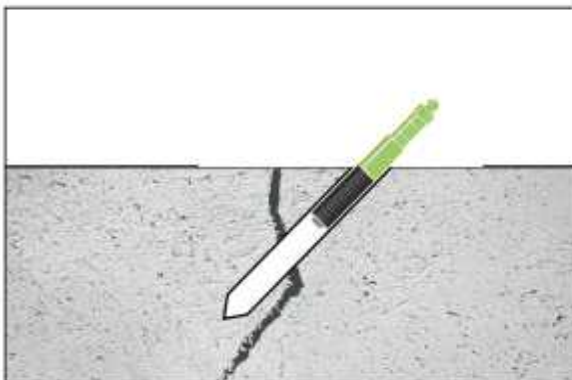
* When you need spare parts,
Pls. contact us with part number.

conrepair@con-repair.com

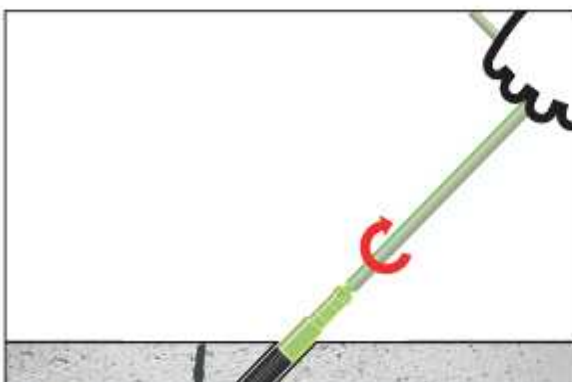
4_(1) Injecting Method (Pump)



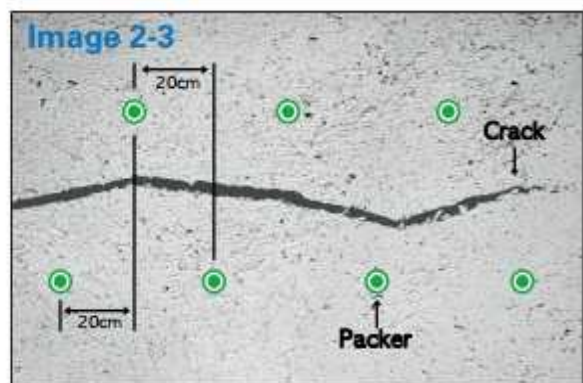
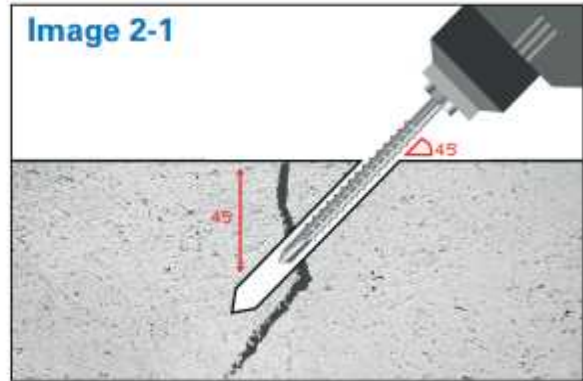
1. Check crack area and Clean up the surface with wire brush or grinder



3. Insert packers into the drilled holes.



4. Fasten packers tightly using T-wrench.

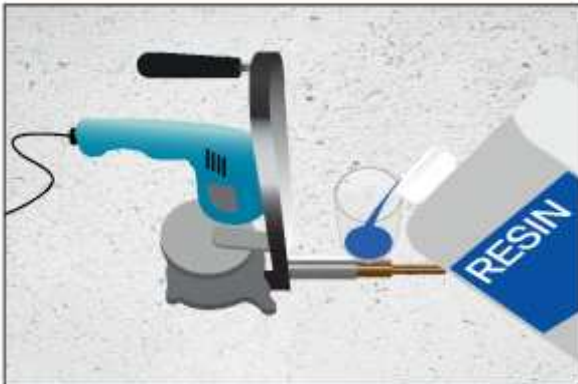


2. Drill holes near cracks using hammer drill, with 45° angle from surface as image 2-1. To prevent that packers don't penetrate through a crack as image 2-2, hole positions must be zigzag as image 2-3, and also make hole distances with every 15~20cm.

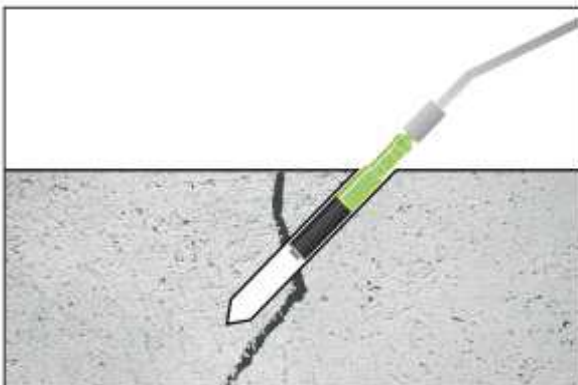
4_(2) Injecting Method (Pump)



5. Connect the hose to the piston.



6. Pour the Resin to the plastic bottle.



7. Connect the grease coupler with the installed packer. (Inject first at low area, and then go to upper area. Down → Up)

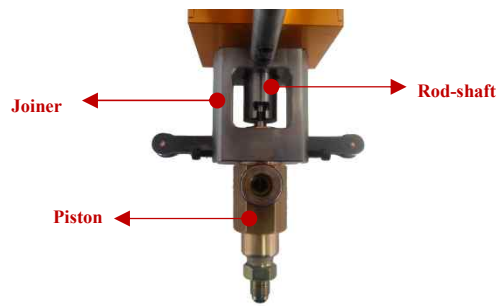


8. Push the switch for running machine, and inject PU foam or Epoxy resin into a hole. Start with low pressure, and increase pressure. When PU foam or Epoxy flows out from the cracks, stop injection, and move to another packer, and start injection again.

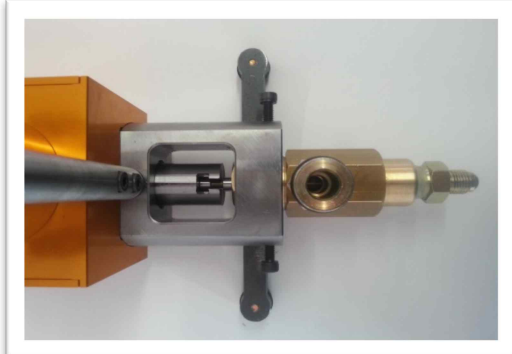


9. After finishing injection work, remove packers by hitting packers using a hammer. Clean the surface using a scraper or a grinder, and if needed, coat with sealing materials.

5. Piston Exchange (CY-1000)



1. Disassemble : Unscrew the two bolts by using wrench.



2. Disassemble : Make rod-shaft to maximum out position by running machine slowly.



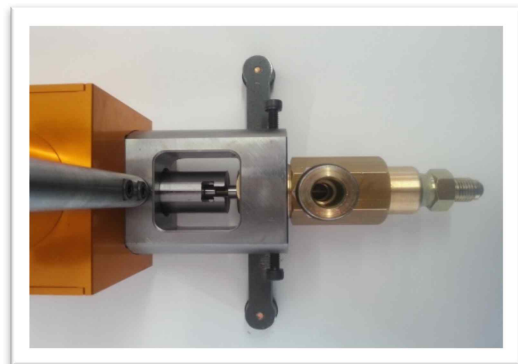
3. Disassemble : Separate the old damaged piston downwards.



4. Disassemble : In case the damaged piston doesn't separate from joiner, please, use chisel and hammer in order to separate as the picture.



5. Assemble : Insert new piston, and fix into the rod-shaft's groove to up from below, as the picture.



6. Assemble : Insert new piston from the below in order to fit into the rod-shaft groove, as the picture.



7. Assemble : Screw the two bolts tightly.

6. Safety

- ▶ Wear protective clothing, gloves, goggles on all exposed skin.
- ▶ In case of contact with skin, wash with soap, flush with plenty of water immediately.
- ▶ In case of contact with eyes, flush with water and get medical attention immediately.
- ▶ It is running by electricity, so comply with the general rules of electrical safety, and avoid inflammables.

7. Caution

As running by electric motor, keeping regulation for usage will extend the pump's life time.

Give 5 minute cooling time every 40 minute usage.

- ▶ Avoid water from the components (such as motor, electric wire, switch, etc)
- ▶ Do not disassemble & convert the product.
- ▶ Do not use if there is damage or breakdown on the product.
- ▶ Be careful not to impact something, and do not drop it.
- ▶ It is only for 220 voltage. Check before use.
- ▶ If foreign substances enter inside products, it can cause the breakdown.

8. Patent Right

This product is under the protection of intellectual property rights. Therefore, duplicating and copying of the product is strictly prohibited by the international law. If someone infringe the rights, we will ask relevant party to take civil/ criminal responsibility, and will demand compensation for the loss. Also, activity of illegal copying of all or part of technical materials related to the product for the purpose of sale or distribution, is strictly prohibited.



HEAD OFFICE: 198-202, Nawabpur Tower, Room No#
311, Nawabpur
Road, Nawabpur, Dhaka- 1100, Bangladesh.
CONTACT:+8801916822106